

# The Islamic Development Bank

IsDB



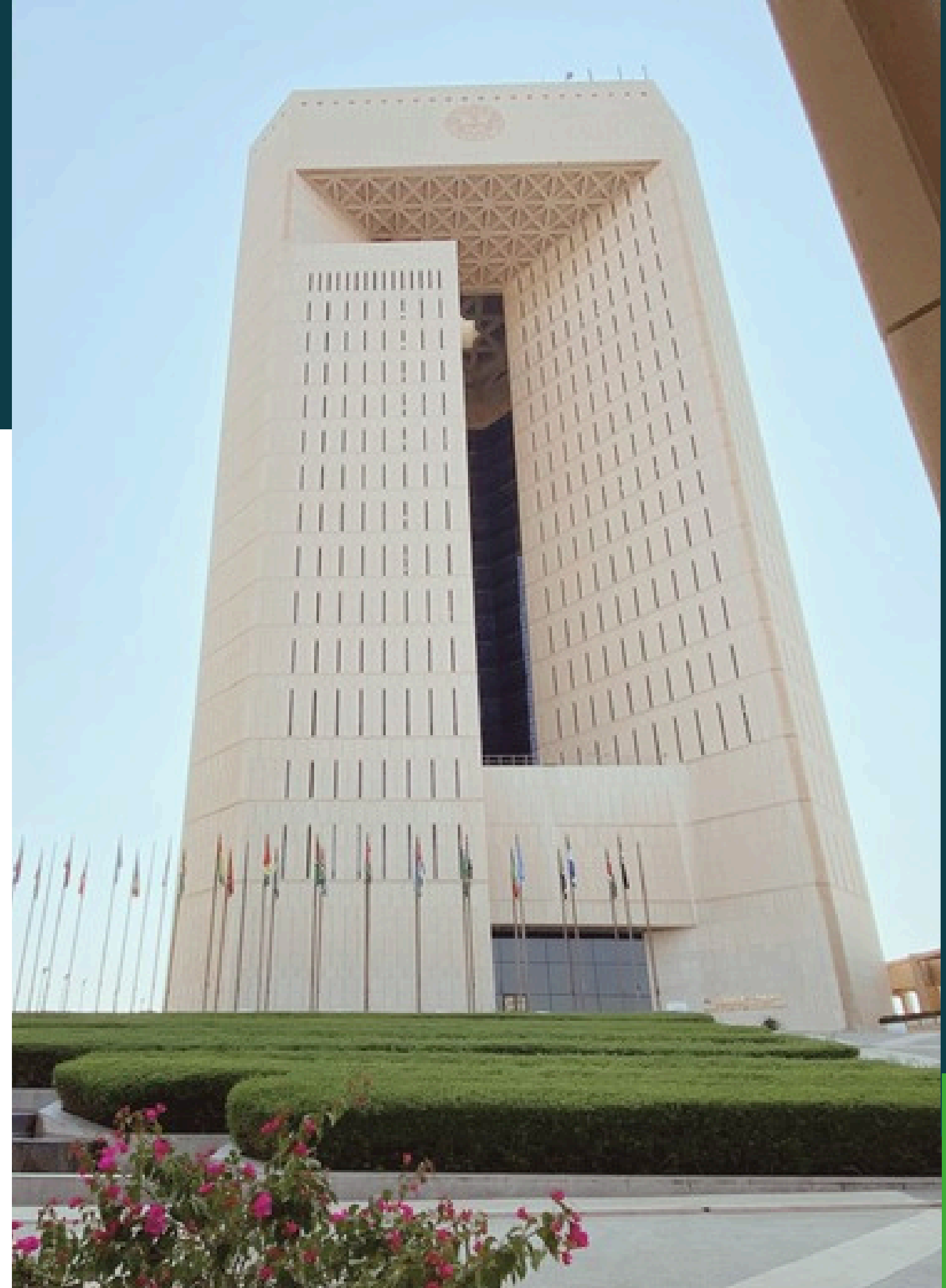


**IsDB**

**Originality and Solidarity  
for Intergenerational Prosperity**

# Why IsDB Exist?

The Islamic Development Bank (IsDB) is a financial institution that **promotes socio-economic development for people in 57 Member Countries** and Muslim communities in Non-Member Countries.





# Who We Are

## **Vision**

IsDB Group strives to become the development partner of choice for its member countries, inspired by Islamic principles, that helps transform the landscape of comprehensive human development in the Muslim world and preserve human dignity.

## **Mission**

The IsDB Group exists to foster economic development and social progress of member countries and Muslim communities individually as well as jointly in accordance with the principles of the Shari'ah.



# IsDB's Unparalleled 'AAA' Credit Rating Across Leading Agencies"

The Islamic Development Bank maintains its pristine 'AAA' credit rating across all major credit rating agencies, affirming its unwavering financial strength since 2007.

Moody's, S&P, and Fitch collectively recognize the Bank's robust risk profile, supported by low leverage, substantial liquid assets, and a strong callable capital stock. This consistent top-tier rating solidifies IsDB's position as one of the most highly-rated MDBs globally and the highest in the Muslim World, reinforcing its capacity for impactful development initiatives and leadership in the Islamic Finance Industry.



# Our Values

## 1 We Believe

all people have the right to live in dignity and prosperity, and that nurturing economic growth is the best route out of poverty.



## 2 We Equip

people to drive their own economic and social progress at scale, putting infrastructure in place to enable them to fulfill their potential.

## 3 We Build

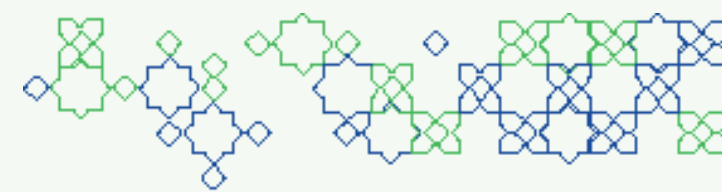
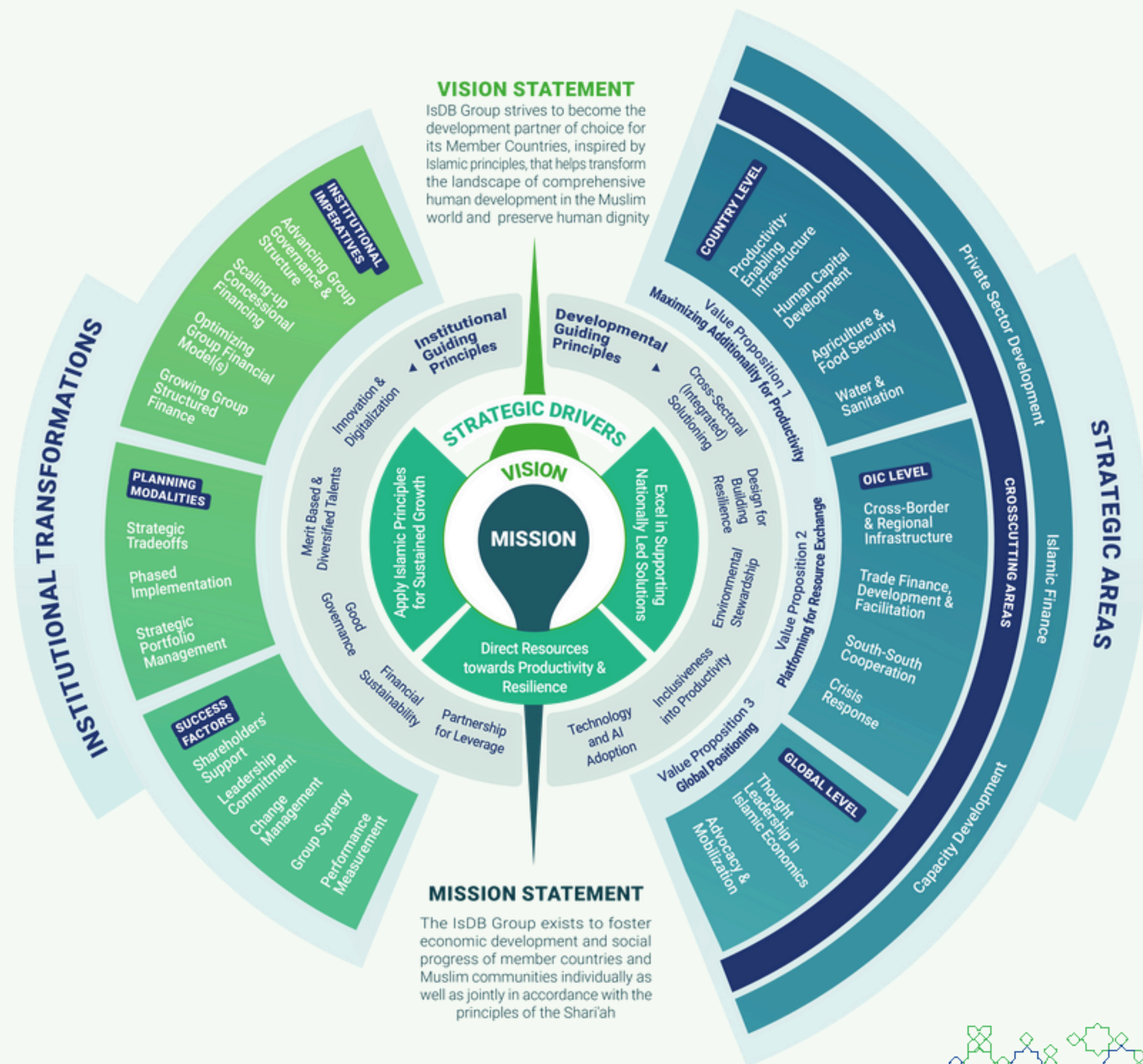
collaborative partnerships among communities and nations, across the public and private sectors.

## 4 We Foster

innovative and sustainable solutions to the world's greatest development challenges, as we work towards the sustainable development goals.



# THE IsDB GROUP STRATEGIC FRAMEWORK (2026-2035): An Integrated View





# The Evolution

The institution has evolved from a single entity to a group comprises 5 entities. In addition, there is a dedicated poverty alleviation arm - The Islamic Solidarity Fund for Development (ISFD)



## **IsDB - 1975**

The Islamic Development Bank is a multilateral development bank that works to improve the lives of people by promoting social and economic development.

## **IsDBI - 1981**

The Islamic Development Bank Institute is responsible for knowledge creation and dissemination in Islamic Economics and Finance.

## **ICIEC - 1994**

The Islamic Corporation for the Insurance of Investment and Export Credit provides investment and export credit insurance for Islamic Countries.

## **ICD - 1999**

The Islamic Corporation for the Development of the Private Sector supports the economic development of its member countries for the private sector projects.

## **ISFD - 2007**




The Islamic Solidarity Fund for Development Provides financial support to enhance the productive capacity and sustainable means of income for the poor.

## **ITFC - 2008**

The International Islamic Trade Finance Corporation is a catalyst for trade development among OIC Member Countries.





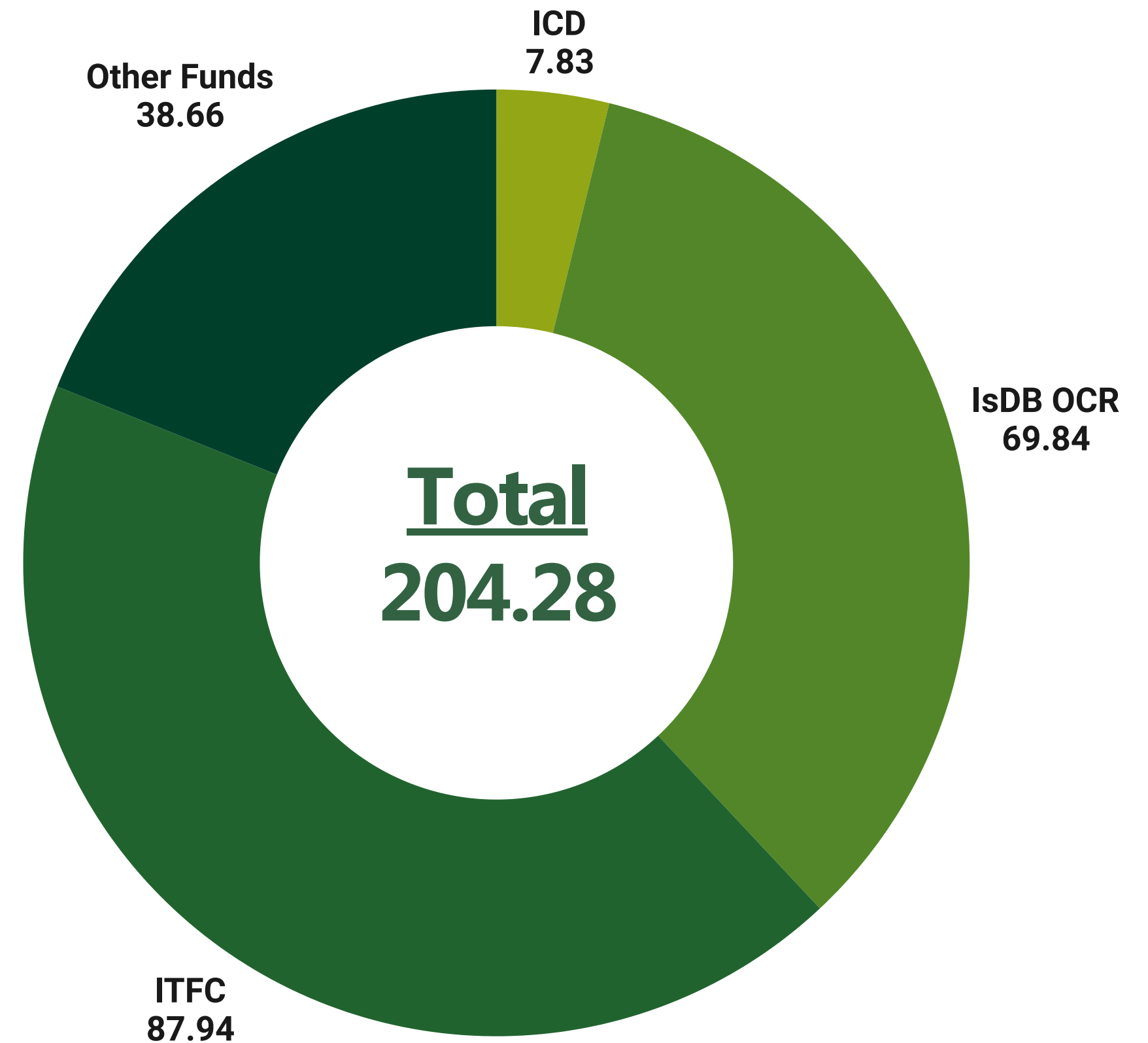
-  ISDB HEADQUARTERS
-  10 REGIONAL HUBS
-  1 CENTER OF EXCELLENCE

# Where We Are

We have our membership  
across 4 continents



US\$ Billion



# Total Net Approvals

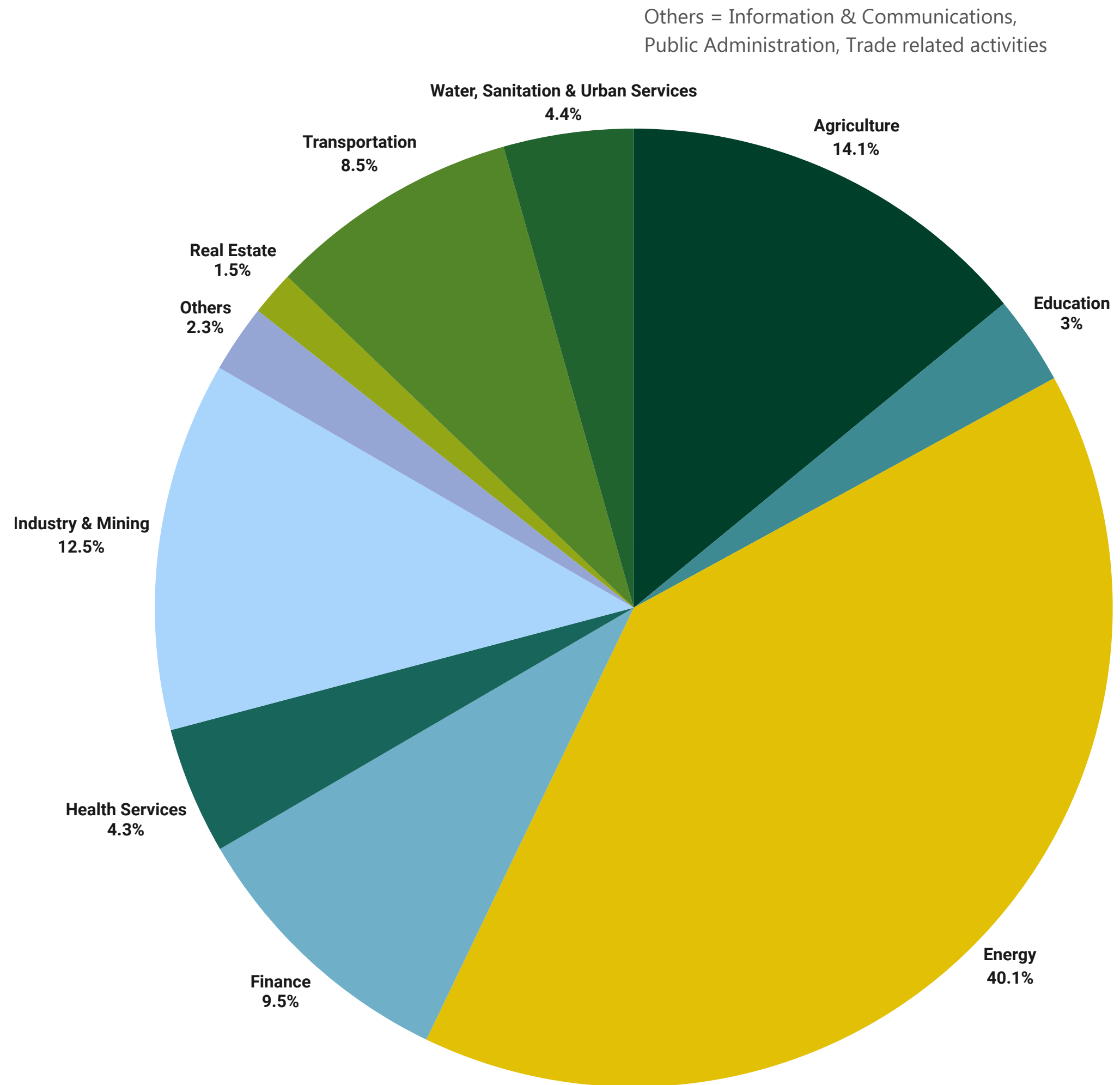
Since Inception for IsDB Group  
(As of 30 June 2025)





# Distribution of Projects

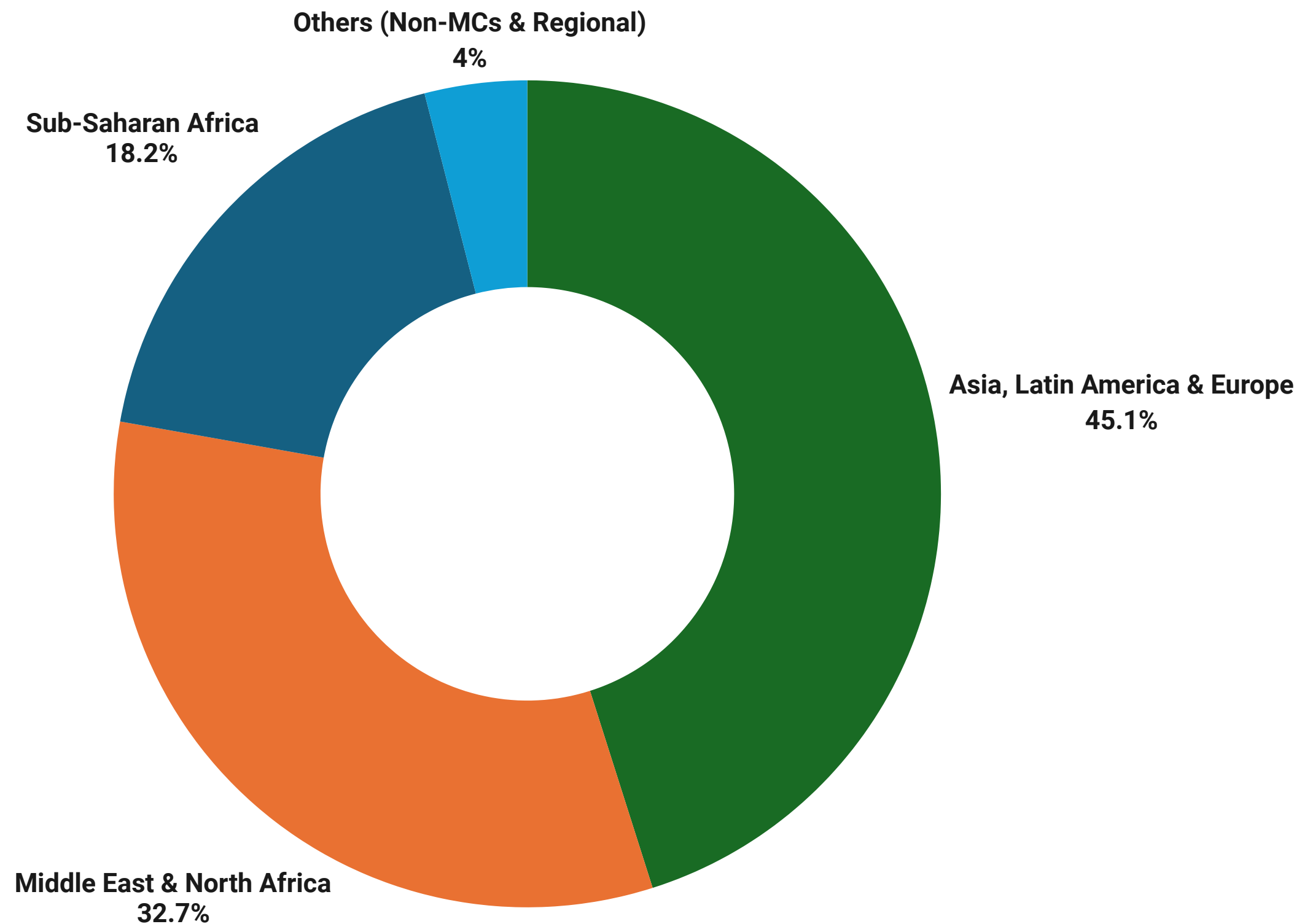
Sectoral Distribution  
(As of 30 June 2025)





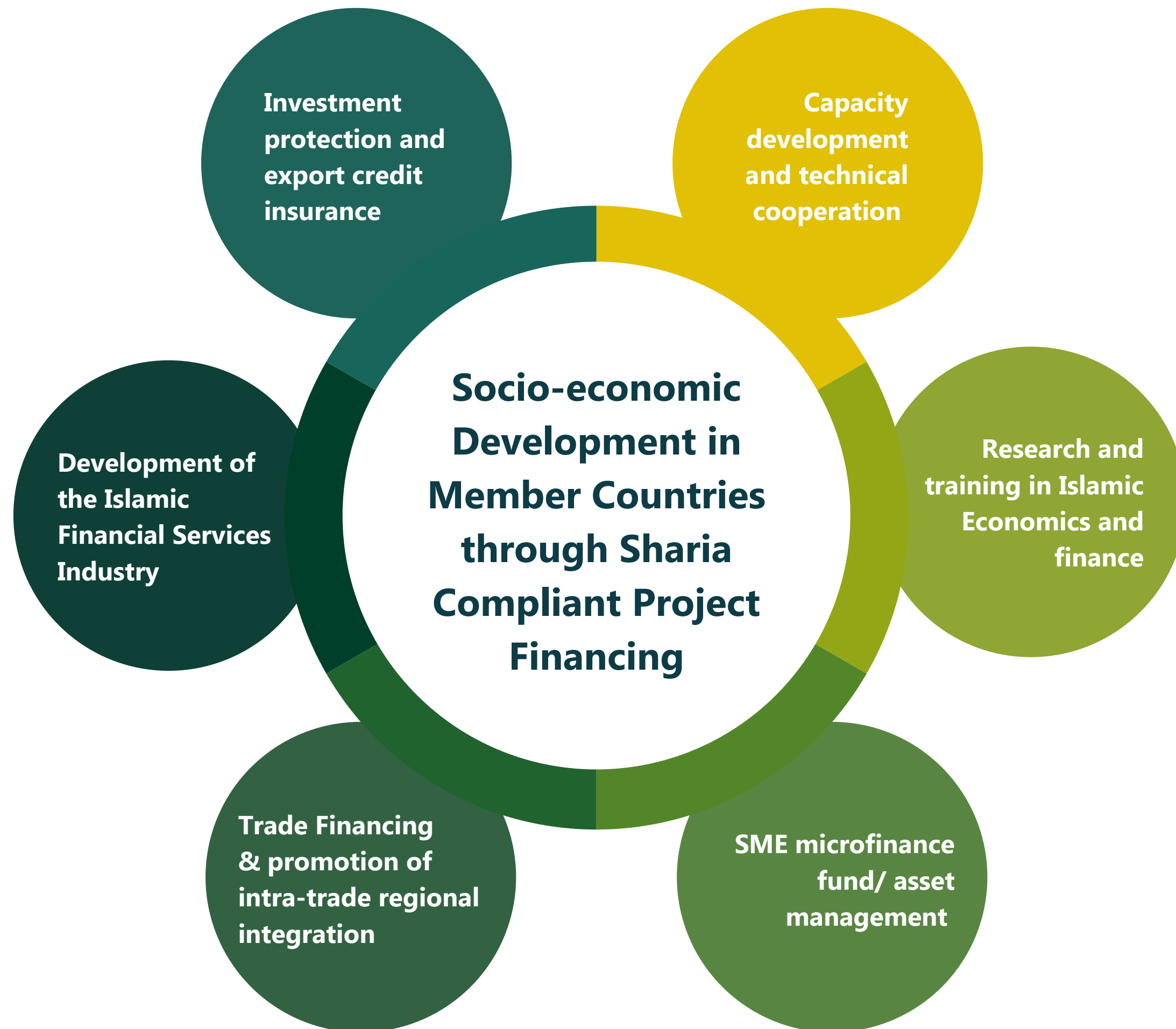
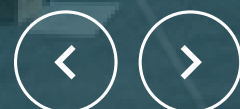
# Distribution of Projects

Geographical Distribution  
(As of 30 June 2025)





# Our Operations





# Our Strategic Drivers

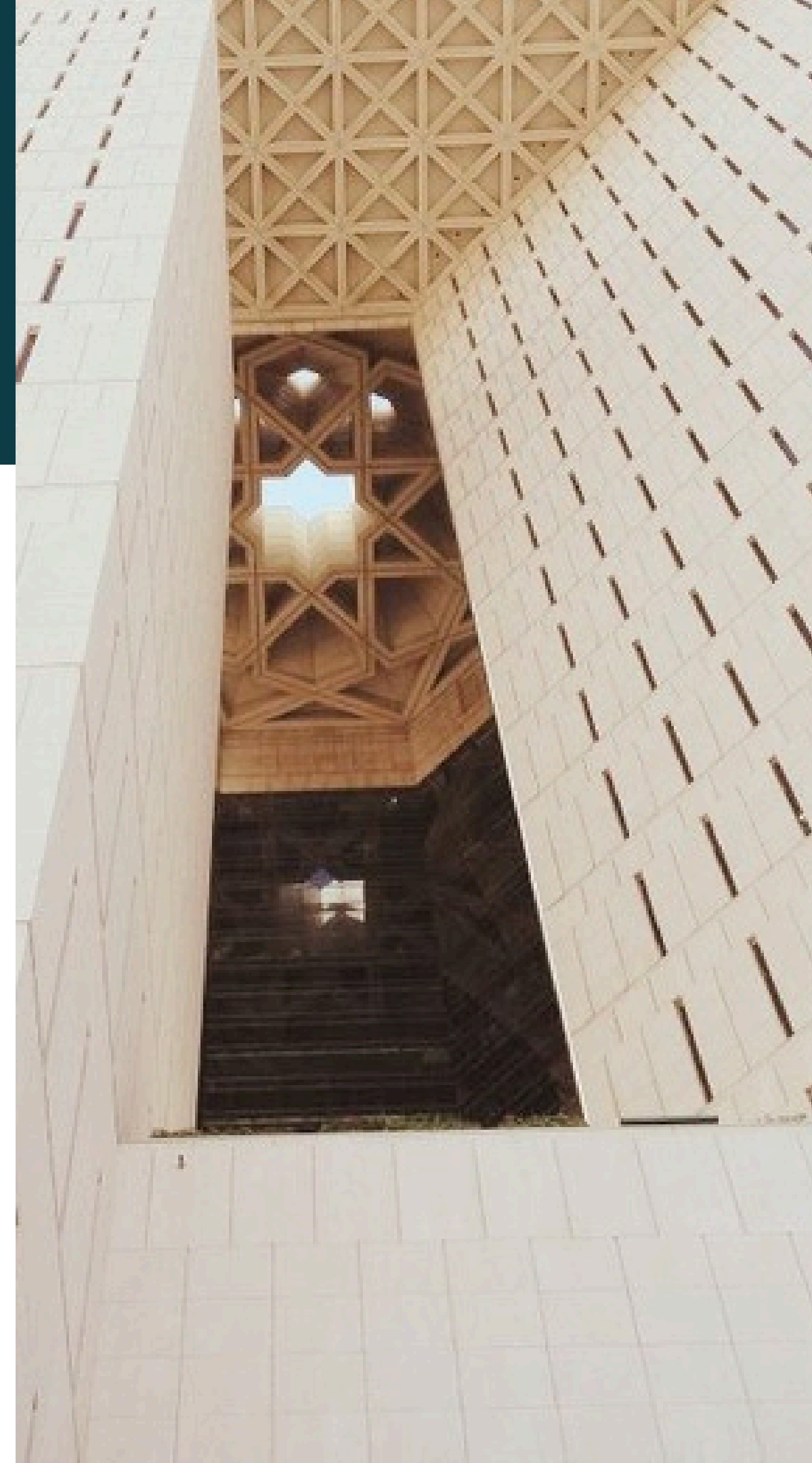
**Excel In Supporting Nationally Driven Solutions**



**Apply Islamic Principles for Sustained Growth**



**Direct Resources towards Productivity and Resilience**







## **APIF** **Awqaf Properties Investment Fund**

Awqaf Properties Investment Fund (APIF) participates in the financing of waqf/endowment income generating commercial and residential real estate properties to enhance the financial sustainability of its beneficiaries and support their social and charitable activities.



## **Lives and Livelihoods Fund**

IsDB and development cooperation partners have launched a Lives and Livelihoods Fund (LLF) with a joint vision to raise the poorest out of poverty in IsDB member countries. The LLF is the largest development initiative of its kind in the Middle East and serves 33 IsDB member countries.



## **Economic Empowerment Fund**

Economic Empowerment Fund for the Palestinian People (EEFPP) will target to empower more than 300,000 Palestinian families during the next decade, and aims to improve the income and livelihood of Palestinian people in the occupied territories.

# Special Initiatives



# Major Partners

## Arab Coordination Group



## MDBs and International Organizations



## Bilateral and Other Organizations





**IsDB**

**Thank you**  
**Merci**  
**شكرا**